

14 Wing Greenwood

**Operations
Overview**



Major Al Harvey

COPSO

14 Wing Operations

12 April 2012



“OPERATE AS ONE”



One of the largest, most diversified air force Wings in Canada



Wing Assets

- LRP
 - CP 140 Auroras
- SAR and Transport
 - CC 130 Hercules
 - EH 10 Cormorant

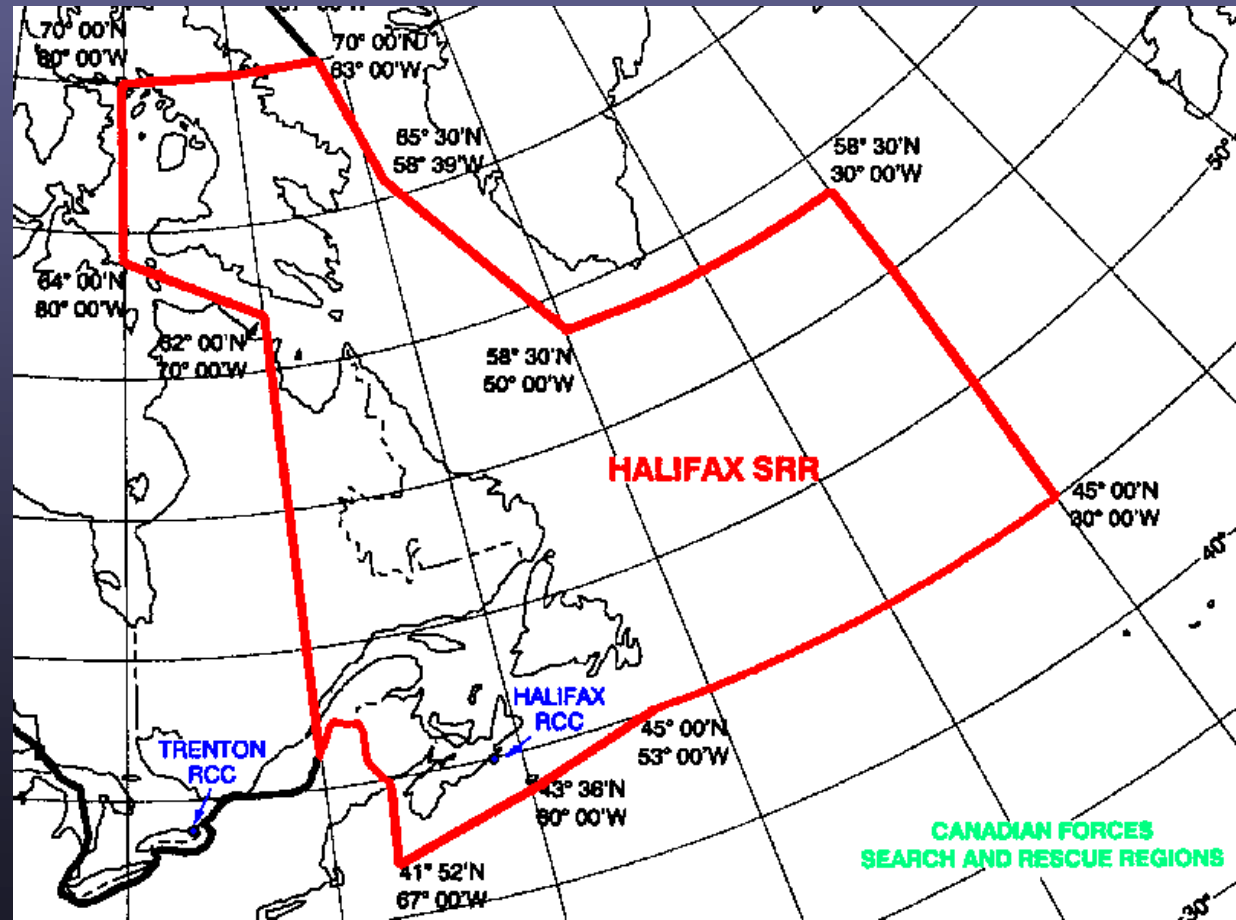




413 Squadron – SAR



SAR Coverage
1.8 million square miles





413 Squadron SAR Missions

- Distress Air
- Distress Marine
- Mercy Air / MedEvac
- Missing Persons
- Emergency Locator Transmitter
- Training Flights / Cadet Familiarization
- Air Transport



CH149 Cormorant evacuation of 20 ship members



16 I IV



24 6 2003



Long Range Patrol Squadrons



Area of Responsibility





Support to the Navy



Most Critical Capability



Overland Support





Sovereignty Patrols

-Show National Presence and Surveillance in the Arctic

-Intelligence Gathering on:

naval activity

mining and drilling

pollution

wildlife migrations





DOMESTIC OPS



Potential Fishery Violations



Illegal Migrants





Counter Narcotics Operations



Pollution Violation



INTERNATIONAL OPS





Support to NORAD (CF18)





Support to NORAD (CF18)

- Continuing support to NORAD
- Forward Operating Base (FOB)
- Quick Reaction Alert status
- Number one priority Canada Defence Mission
- Quick “In and Out”
- Priority take-off and landings
- Low fuel levels



OPERATE AS ONE

Questions?

14 Wing Greenwood

**Kings County PAC
Brief**

Capt Chris Bridges

14 Wing Air Traffic Control



12 April 2012



Outline

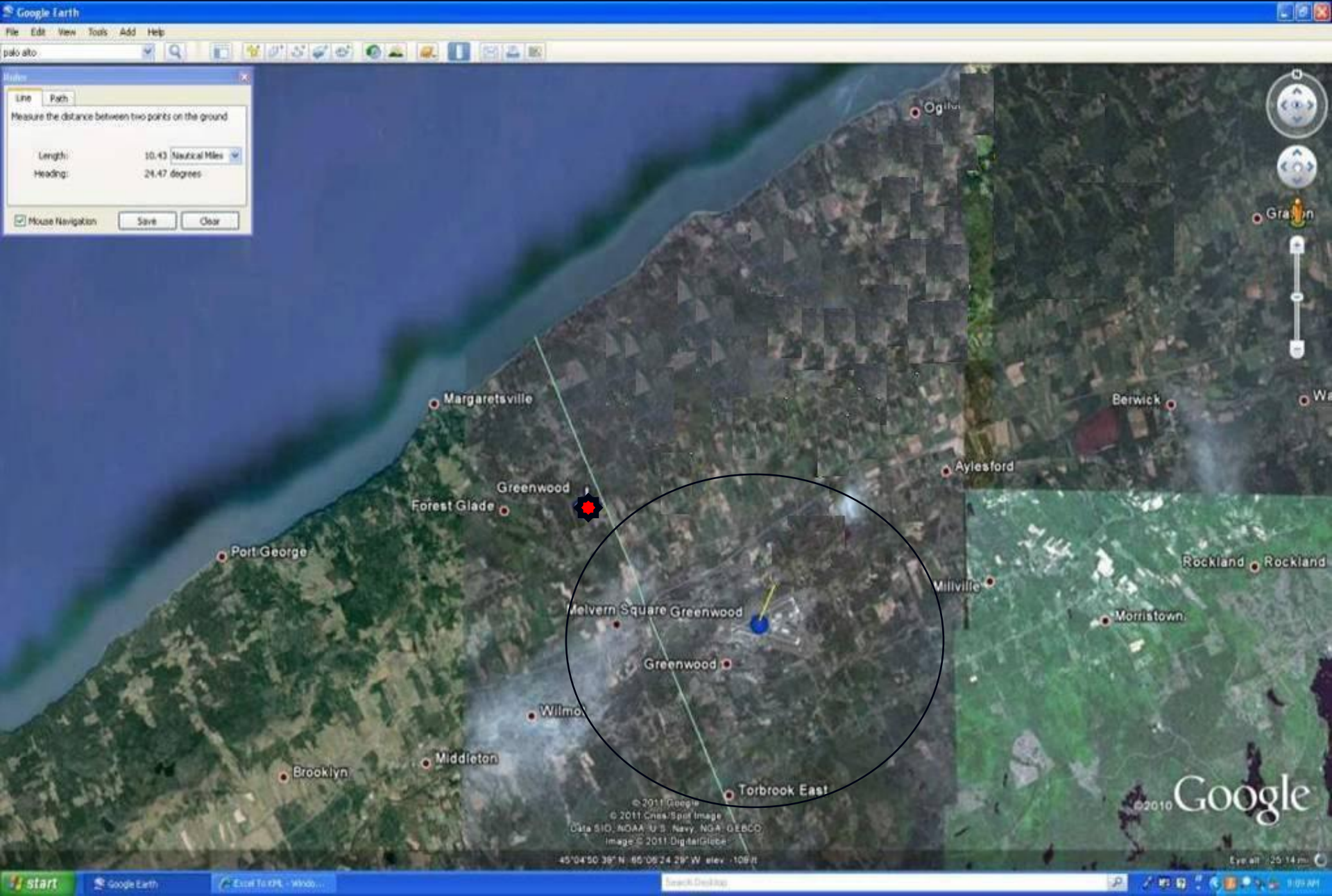
- Intro
- Airspace Structure and Zoning
- Points of Concern
- Impact Statement
- Questions



14 Wing Greenwood

- Built in 1940's expanded in 1950's;
- Canada's 2nd largest air base;
- Largest Air Base East of Ontario;
- Employs 2600 military/civilian.

Aerodrome Zoning



Airspace Structure



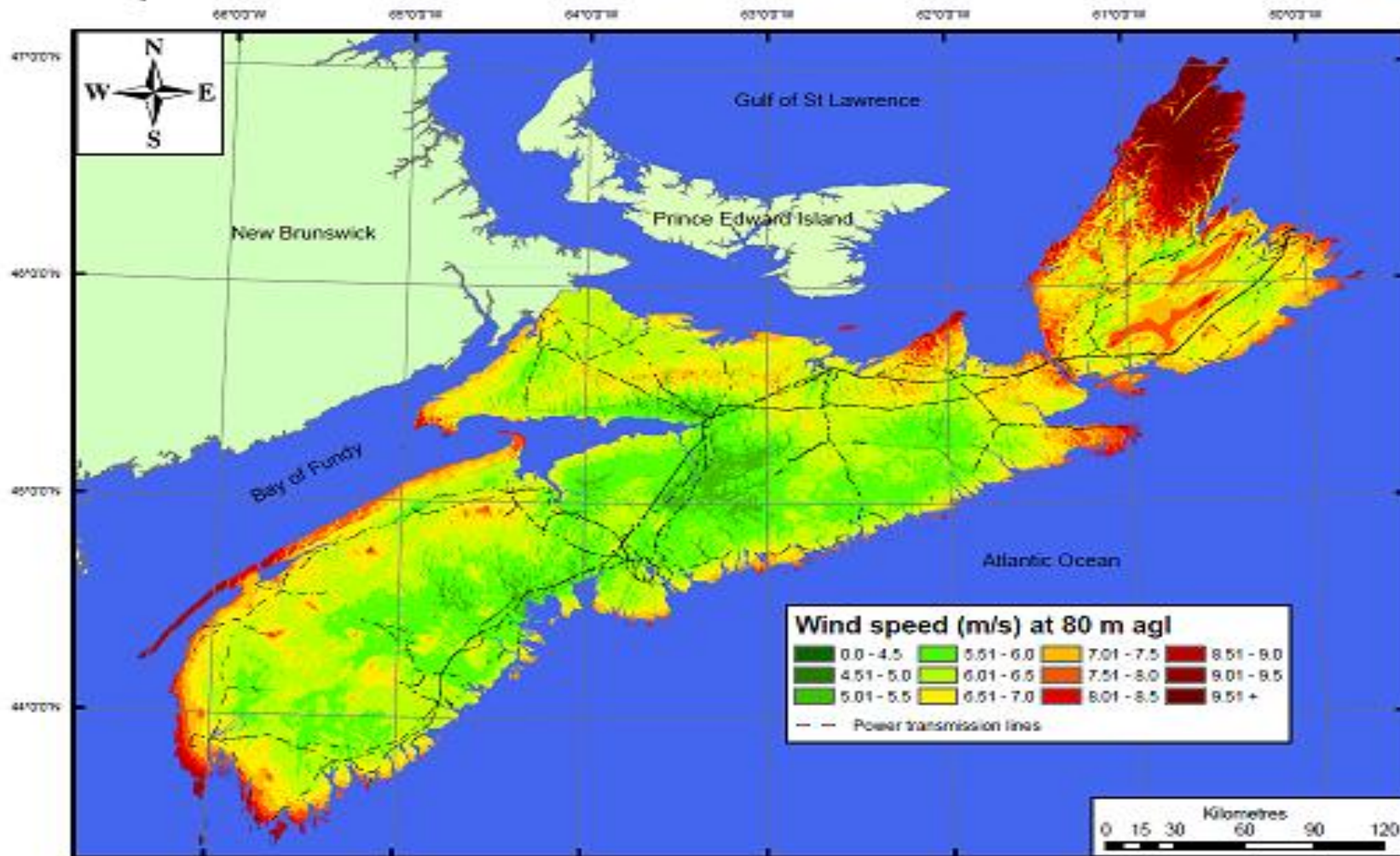


NS Wind Atlas



Wind Resource Map of Nova Scotia (80 m)

<http://www.nswindatlas.ca>





Points of Concern

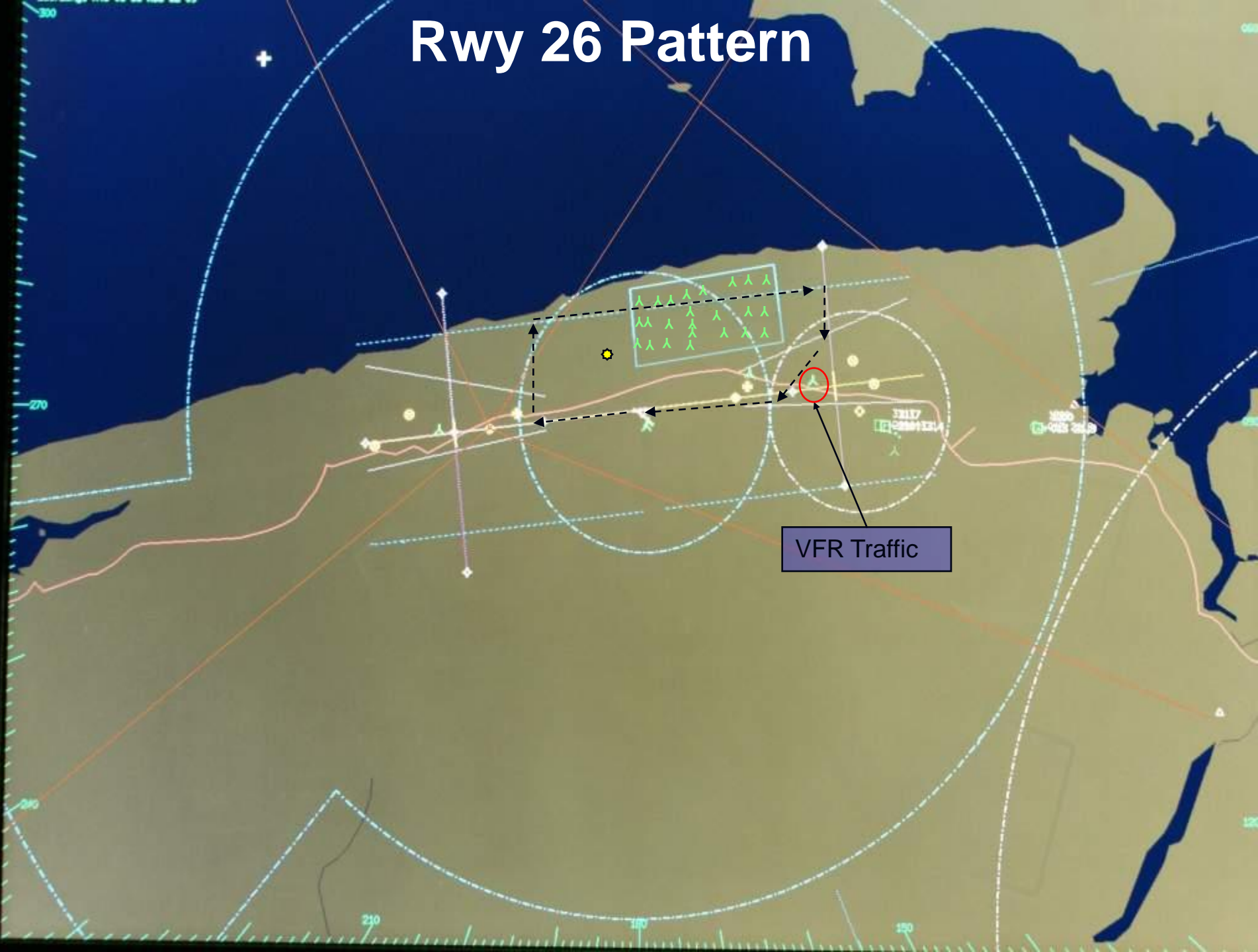
- Excessive Primary Surveillance Radar (PSR) targets;
- Loss of radar coverage in Instrument Flight Rules (IFR) traffic pattern;
- Interference with Secondary Surveillance Radar (SSR);
- Loss of radio communications;
- Obstruction to Visual Flight Rules (VFR) traffic;



Excessive PSR targets

- Appearance on radar screen is identical to chaff radar jamming;
- Loss of radar coverage on non-transponder aircraft over turbines;
- Hides targets (birds, weather and other aircraft);

Rwy 26 Pattern



Rwy 08 Pattern



Radar Shadow Area





Summary

- In summary wind turbines will interfere greatly with 14 Wing operations, both VFR and IFR;
- Loss of radar coverage on non-transponder aircraft over turbines;
- Hides targets (birds, weather and other aircraft);



OPERATE AS ONE

Questions?